



India Meteorological Department  
(Ministry of Earth Sciences)

NATIONAL BULLETIN NO. 26 (BOB/06/2024)

TIME OF ISSUE: 2100 HOURS IST

DATED: 25.10.2024

FROM: INDIA METEOROLOGICAL DEPARTMENT (FAX NO. 24643965/24699216/24623220)

TO: CONTROL ROOM, NDM, MINISTRY OF HOME AFFAIRS (FAX.NO. 23093750)  
CONTROL ROOM NDMA (FAX.NO. 26701729)  
CABINET SECRETARIAT (FAX.NO.23012284, 23018638)  
PS TO HON'BLE MINISTER FOR S & T AND EARTH SCIENCES (FAX NO.23316745)  
SECRETARY, MOES (FAX NO. 24629777)  
H.Q. (INTEGRATED DEFENCE STAFF AND CDS) (FAX NO. 23005137/23005147)  
DIRECTOR GENERAL, DOORDARSHAN (23385843)  
DIRECTOR GENERAL, AIR (23421105, 23421219)  
PIB MOES (FAX NO. 23389042)  
UNI (FAX NO. 23355841)  
D.G. NATIONAL DISASTER RESPONSE FORCE (NDRF) (FAX NO. 26105912, 2436 3260)  
DIRECTOR, PUNCTUALITY, INDIAN RAILWAYS (FAX NO. 23388503)  
CHIEF SECRETARY, ODISHA (FAX NO. 0674-2536660)  
CHIEF SECRETARY, WEST BENGAL (FAX NO. 033-22144328)  
CHIEF SECRETARY, ANDAMAN & NICOBAR ISLANDS (FAX NO. 03192-232656)  
CHIEF SECRETARY, ANDHRA PRADESH (FAX NO. 0863-2441029)  
CHIEF SECRETARY, TAMIL NADU (FAX NO. 044-25672304)  
CHIEF SECRETARY, PUDUCHERRY (FAX NO. 0413-2334145)  
CHIEF SECRETARY, JHARKHAND (FAX NO. 0651-2400240)  
CHIEF SECRETARY, BIHAR (FAX NO. 0612-2205800)

**Subject: Deep Depression (remnant of severe cyclonic storm "DANA") over north Odisha**

The deep depression (remnant of severe cyclonic storm "DANA") over north coastal Odisha moved westwards with a speed of 7 kmph during past 6 hours and lay centred near latitude 21.4°N and longitude 86.2°E at 1730 hrs IST of today, the 25th October over north Odisha about 50 km northwest of Bhadrak and 70 km east-southeast of Keonjhar.

It is likely to move nearly westwards across north Odisha and weaken gradually into a depression during next 12 hours.

The system is under continuous surveillance of the doppler weather radar at Paradip.

**Warnings:**

**(i) Rainfall Warning:**

- ❖ Light to moderate rainfall at most places with **heavy to very heavy rainfall** at isolated places is very likely over **Mayurbhanj, Keonjhar, Balasore and Bhadrak** districts of Odisha on 25<sup>th</sup> October.
- ❖ **Light to moderate rainfall at most places with heavy to very heavy rainfall** at isolated places over coastal districts of West Bengal on 25<sup>th</sup> October.

- ❖ Light to moderate rainfall at many places with **heavy rainfall** at isolated places is likely over south Jharkhand on 25<sup>th</sup> October.

**(ii) Wind Warning:**

**Northwest Bay of Bengal:** Squally wind speed reaching 30-40 gusting to 50 kmph is likely to prevail on 25<sup>th</sup> October 2024.

**Northwest Bay of Bengal and along & off Odisha-West Bengal coasts and adjoining interior districts:** Squally wind speed reaching 40-50 kmph gusting to 60 kmph would prevail over Balasore, Mayurbhanj, Keonjhar, Bhadrak, Kendrapara districts of Odisha and East Medinipur and Jhargram districts of West Bengal on 25<sup>th</sup> October.

**South Jharkhand:** Squally wind speed reaching 30-40 kmph gusting to 60 kmph is very likely to prevail on 25<sup>th</sup> October.

**(iii) Sea Condition:**

**Northwest Bay of Bengal and along & off Odisha-west Bengal coasts:** Sea condition is likely to be **Rough** on 25<sup>th</sup> October and improve gradually thereafter.

**(v) Fishermen Warning:**

Fishermen are advised not to venture into Northwest Bay of Bengal and along & off Odisha and West Bengal coasts on 25<sup>th</sup> October.

❖ **Impact Expected over districts of Odisha (Balasore, Bhadrak, Mayurbhanj, Keonjhar, Dhenkanal, Kendrapara, Cuttack and Jajpur) and West Bengal (South 24-Parganas, East & West Medinipur and Jhargram) on 25<sup>th</sup> October**

- Damage to thatched houses/ huts. Unattached metal sheets may fly.
- Breaking of tree branches and uprooting of trees.
- Partial damage to power and communication lines.
- Damage to Kutcha and some damage to Pucca roads. Flooding of escape routes.
- Damage to vulnerable structure.
- Damage to standing crops including banana, papaya, horticultural and vegetable crops due to inundation and wind.
- Localized Flooding of roads, water logging in low lying areas and closure of underpasses mainly in urban areas of the above region.
- Occasional reduction in visibility due to heavy rainfall.
- Disruption of traffic in major cities and roadways due to water logging in roads and poor visibility due to heavy rain leading to increased travel time and incidents
- Localized Landslides/Mudslides/landslips/mud slips/land sinks/mud sinks.
- Likely disruption of marine and inland water transportation like small boats and trawlers.
- It may lead to riverine flooding in some river catchments (for riverine flooding please visit Webpage of Central Water Commission)

❖ **Action Suggested for districts of Odisha (Balasore, Bhadrak, Mayurbhanj, Keonjhar, Dhenkanal, Kendrapara, Cuttack and Jajpur) and West Bengal (South 24-Parganas, East & West Medinipur and Jhargram) on 25<sup>th</sup> October**

- Fishermen are advised not to venture into Northwest Bay of Bengal and along & off Odisha and West Bengal coasts on 25<sup>th</sup> October.
- Movement in motor boats unsafe
- People in affected areas to remain indoors.
- Judicious regulation of Port and maritime activities including shipping.

- Judicious regulation of tourism activities in coastal areas.
- Judicious regulation of surface transports including railways and roadways.
- Check for traffic congestion on your route before leaving for your destination.
- Follow any traffic advisories that are issued in this regard.
- Avoid going to areas that face the water logging problems often.
- Avoid staying in vulnerable structure.

**Next bulletin will be issued at 0230 hours IST of tomorrow, the 26<sup>th</sup> October, 2024.**

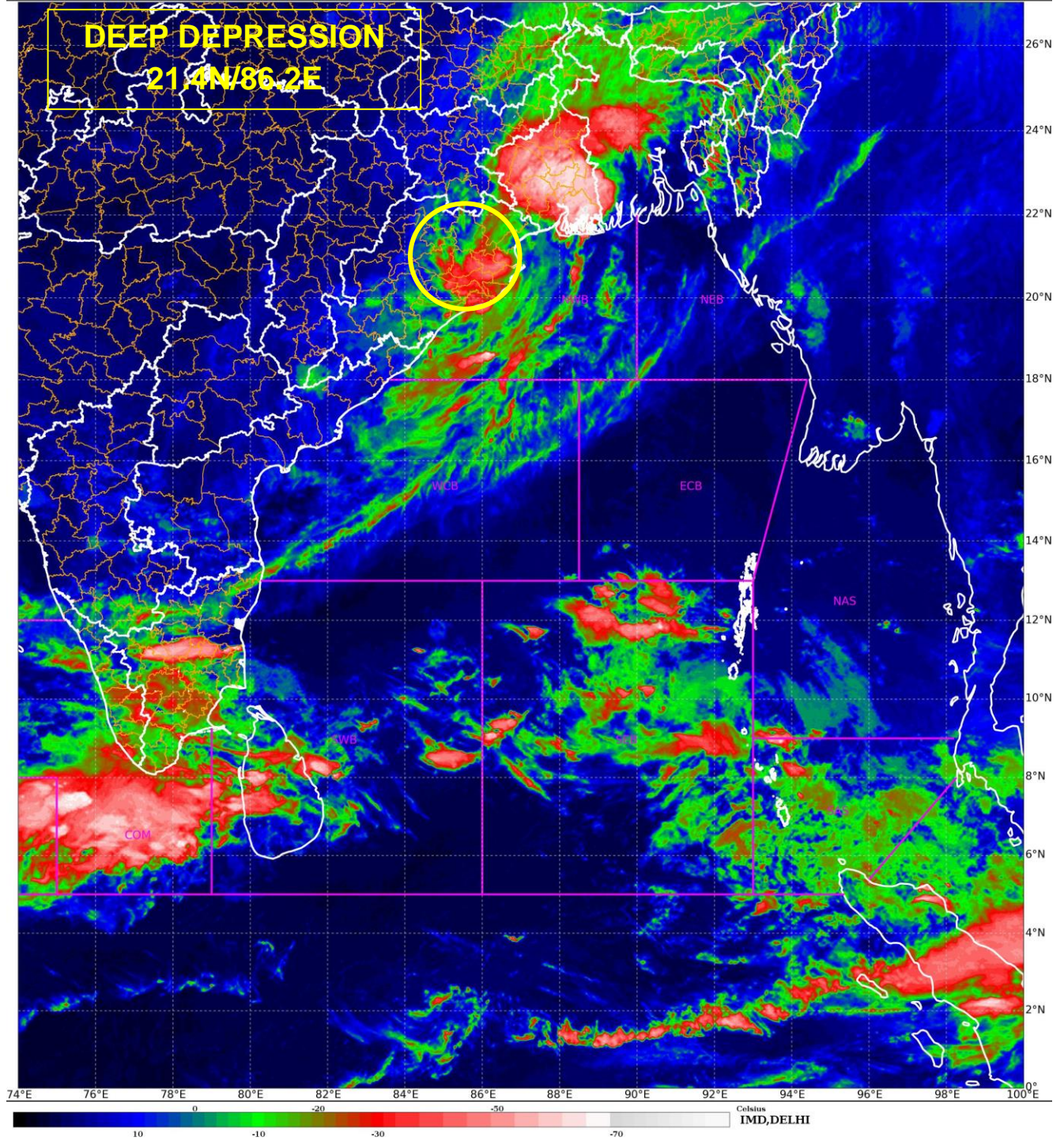
**(D. R. Pattanaik)**  
**Scientist-F, IMD, New Delhi**

*Copy to: ACWC Kolkata/ACWC Chennai/CWC Bhubaneswar/CWC Vishakhapatnam/Meteorological Centre Port Blair/MC Ranchi*

# SATELLITE IMAGERY

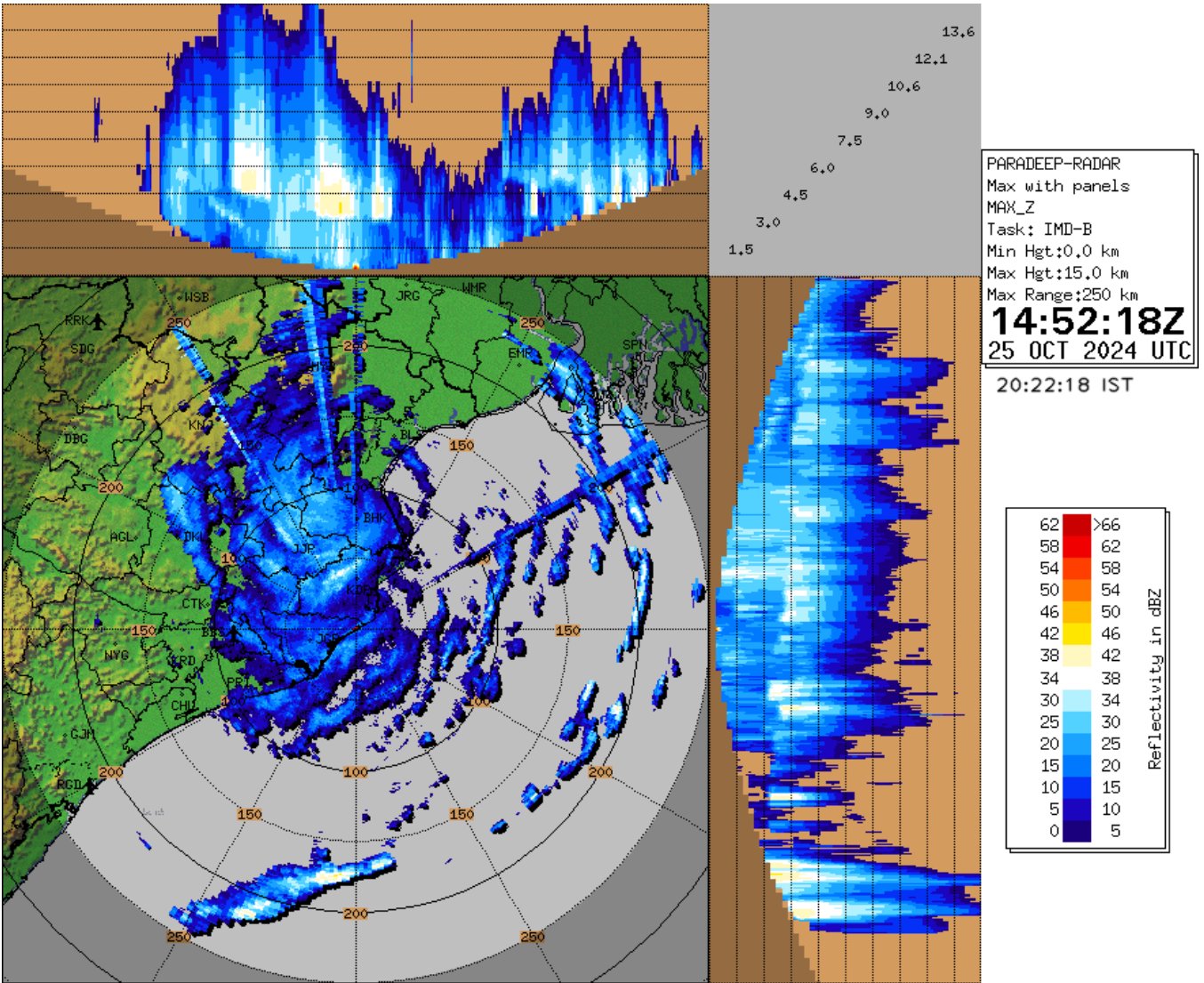
SAT : INSAT-3DR IMG  
IMG\_TIR1\_TEMP 10.8 um  
LIC Mercator

25-10-2024/(1415 to 1442) GMT  
25-10-2024/(1945 to 2012) IST





# RADAR OBSERVATIONS (MAX\_Z) OF DWR PARADIP



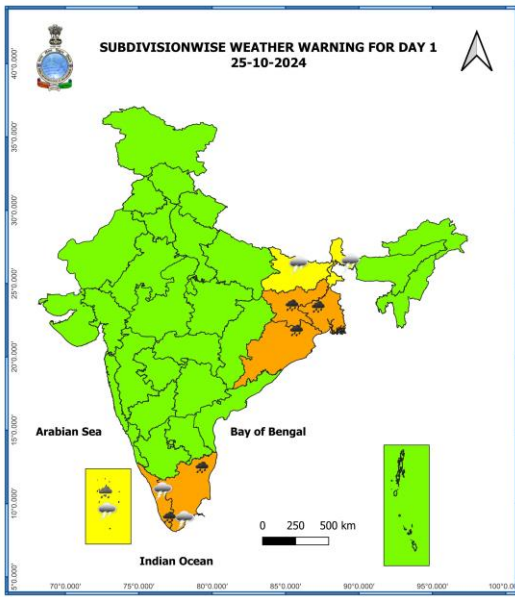


**OBSERVED AND FORECAST TRACK OF DEEP DEPRESSION (REMNANT OF SEVERE CYCLONIC STORM 'DANA') OVER NORTH ODISHA BASED ON 1200 UTC (1730 Hrs. IST) OF 25<sup>th</sup> OCTOBER 2024**



**DATE/TIME** : IN UTC  
**IST** : UTC + 0530  
**KT** : NAUTICAL MILE S/HOUR = 1.85 KM/HOUR  
**LPA** : LOW PRESSURE AREA  
**WML** : WELL MARKED LOW PRESSURE AREA  
**D** : DEPRESSION (17-27 KT)  
**DD** : DEEP DEPRESSION (28-33 KT)  
**CS** : CYCLONIC STORM (34-47 KT)  
**SCS** : SEVERE CYCLONIC STORM (48-63 KT)  
**VSCS** : VERY SEVERE CYCLONIC STORM (64-89 KT)  
**ECS** : EXTREMELY SEVERE CYCLONIC STORM (90-119 KT)  
**SuCS** : SUPER CYCLONIC STORM (≥120 KT)

|  |                     |
|--|---------------------|
|  | LESS THAN 34 KT     |
|  | 34-47 KT            |
|  | ≥ 48 KT             |
|  | OBSERVED TRACK      |
|  | FORECAST TRACK      |
|  | CONE OF UNCERTAINTY |



Heavy Rain

Very Heavy Rain

Extremely Heavy Rain

**COLOUR CODED WARNING**

**No Warning (No Action)**

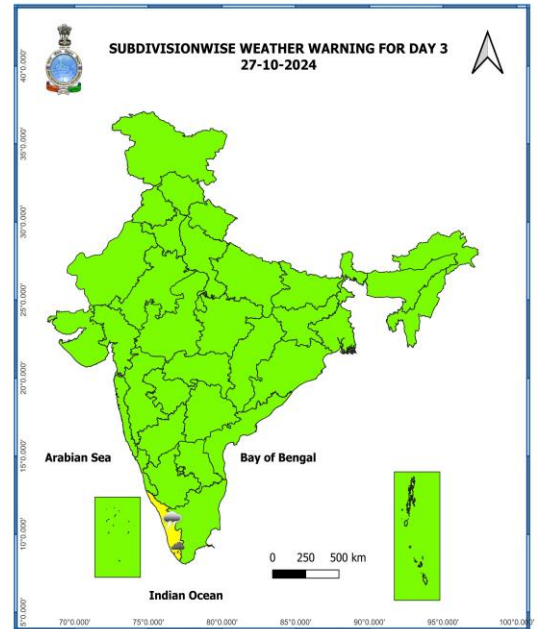
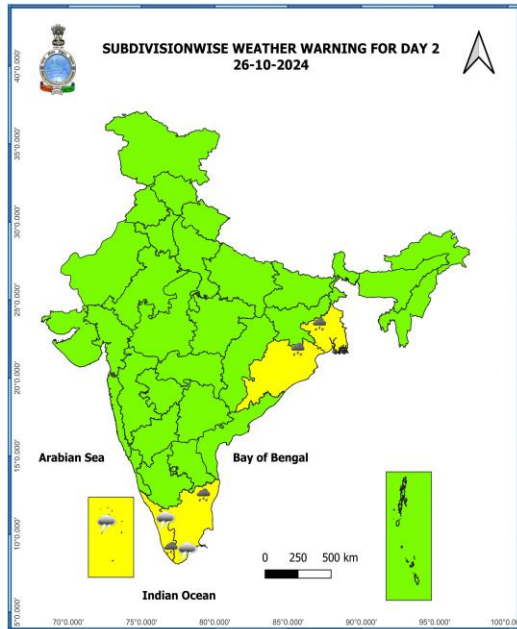
**Watch (Be Aware)**

**Alert (Be Prepared To Take Action)**

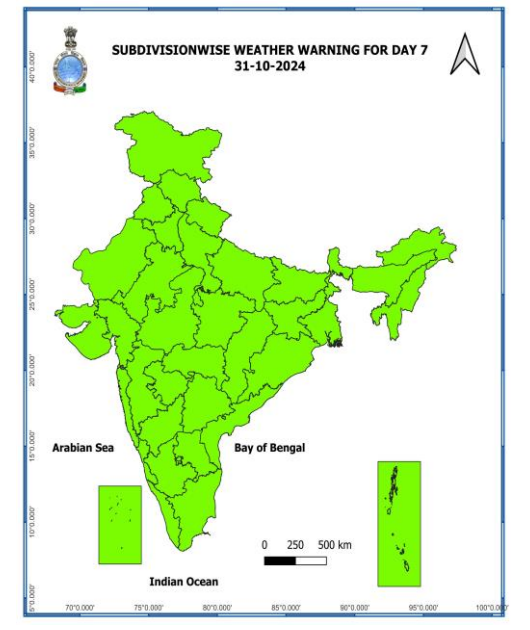
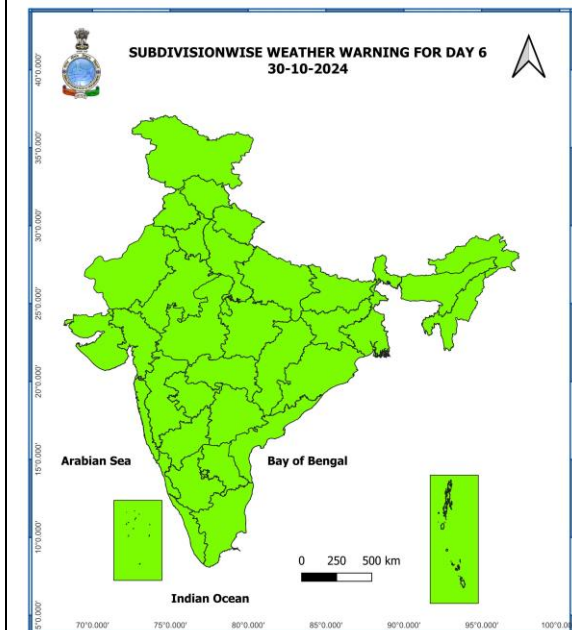
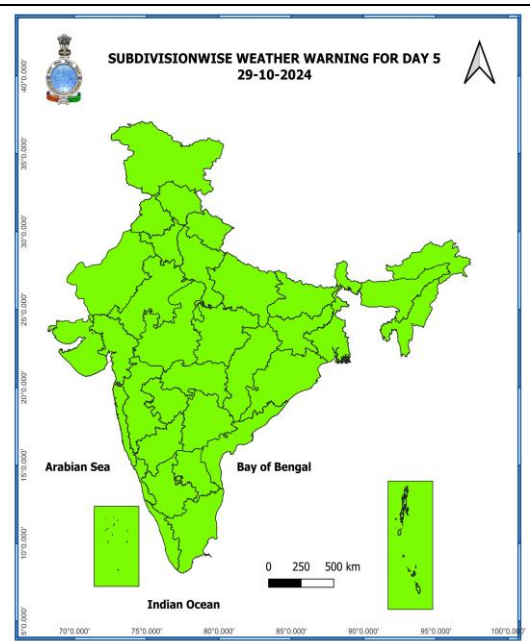
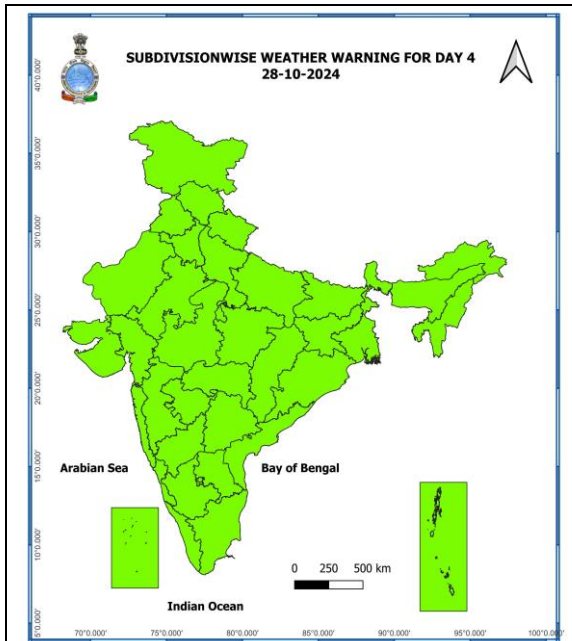
**Warning (Take Action)**

**Probabilistic Forecast**

| Terms       | Probability of Occurrence (%) |
|-------------|-------------------------------|
| Unlikely    | < 25                          |
| Likely      | 25 - 50                       |
| Very Likely | 50 - 75                       |
| Most Likely | > 75                          |







- Action may be taken based on **ORANGE AND RED** COLOUR warnings.
- Vulnerable regions likely urban and hilly areas action may be initiated for heavy rainfall warning.
- As the lead period increases forecast accuracy decreases.



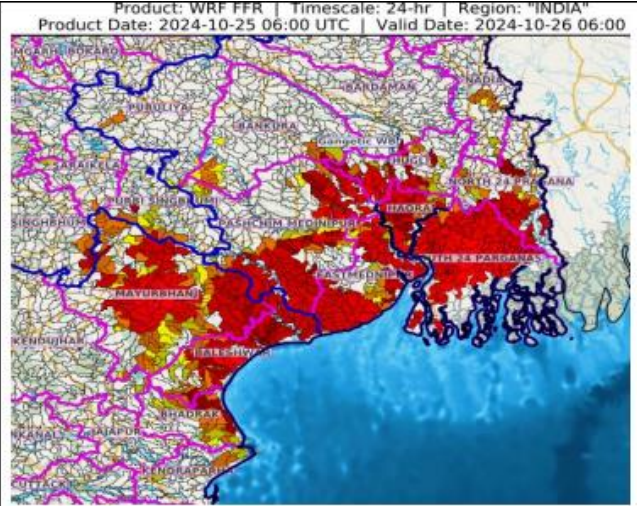
## 24 HOURS OUTLOOK FOR THE FLASH FLOOD RISK

### **24 hours Outlook for the Flash Flood Risk (FFR) till 1130 IST of 26-10-2024 :**

**Moderate flash flood risk** likely over few watersheds & neighbourhoods of following Met Sub-divisions during next 24 hours.

**Odisha** - Baleshwar, Bhadrak, Kendraparha and Mayurbhanj districts.  
**Gangetic West Bengal** - Bankura, Eastmednipur, Haora, Hugli, Nadia, North 24 Pragana, Pashchim Medinipur, Puruliya and South 24 Parganas districts.

Surface runoff/ Inundation may occur at some fully saturated soils & low-lying areas over AoC as shown in map due to expected rainfall occurrence in next 24 hours.



### **Flash Flood Risk**

 **High Risk (Take Action)**

 **Moderate Risk (Be Prepared)**

 **Low Risk (Be Updated)**

## Fishermen Warning Graphics

